

QUALITY CHANGES THE WORLD

PRODUCT
SPECIFICATIONS



STC800T5

SANY TRUCK CRANE
80T LIFTING CAPACITY

80T汽车起重机



80 t



49.5 m



2881 kN·m

www.sanyglobal.com

L/R HAND-DRIVE BOTH AVAILABLE
左右舵皆可售

V1.7



Five section large cross section boom, full extension length 49.5m at 42m radius, 17.5m bi-fold jib available. The lifting performance leads in industry.

5节大截面主臂,全伸臂长49.5m,吊载幅度达42m,配备17.5m折叠副臂,吊载能力行业领先。



Outriggers extend to 7.7m in full span, making lifting operation more stable. Newly developed half extension mechanism makes the crane more adaptable to work at constricted area.

横向支腿跨距增至7.7m,吊载更稳定。全新开发的半伸支腿系统,更适用于狭窄空间作业。



Fixed CW 3t, movable CW 7t, featuring three combinations. Additional 5t or 5t*2 CW for option. The crane can travel with 15t CW on board at low speed (<20km/h) in short distance. CW assembly efficiency significantly increased via auto-lock after CW lifted to position.

固配3t,活动配重共7t,3种组合,可另选配一块或两块5t,可带15t配重短距离低速(<20km/h)转场。
配重提升后油缸自动锁止,减少安装步骤和时间,效率大幅提升。

SANY TRUCK CRANE STC800T5 / 80T LIFTING CAPACITY



Remark :this illustration is crane with 15t counterweight (optional) for jobsite traveling.

备注 :此图为带15t配重(选配)工地转场状态。



0-20° tiltable cab, relieving fatigue in long time operation.
 Side step available, making getting in and out of the cab easier and safer.
 45° tilted membrane buttons, easy to view and touch.
 Six-outlet air conditioning, more comfortable.

操纵室最大变位角度 20°，长臂段、大角度工作颈椎无忧。
 带踏板，进出方便安全。
 45° 全新薄膜按键面板，触手可及，操作便捷；
 6 通道立体通风，体感舒适。



SANY TRUCK CRANE STC800T5 / 80T LIFTING CAPACITY



Remark :this illustration is crane with 20t counterweight (optional) in working status, not for traveling.

备注 :此图为 20t 配重(选配)作业状态,非行驶状态。



All new double pump intelligent flow distribution system shared by all T-series models lifts combined motion stability by over 50%. High precision lifting work of mm-level with min. winch single rope speed <math><1.5\text{m}/\text{min}</math>, min. slewing stable speed <math><0.15^\circ/\text{s}</math>. Electrical control saves energy by 15% during loading, raises heavy load efficiency by 30%.

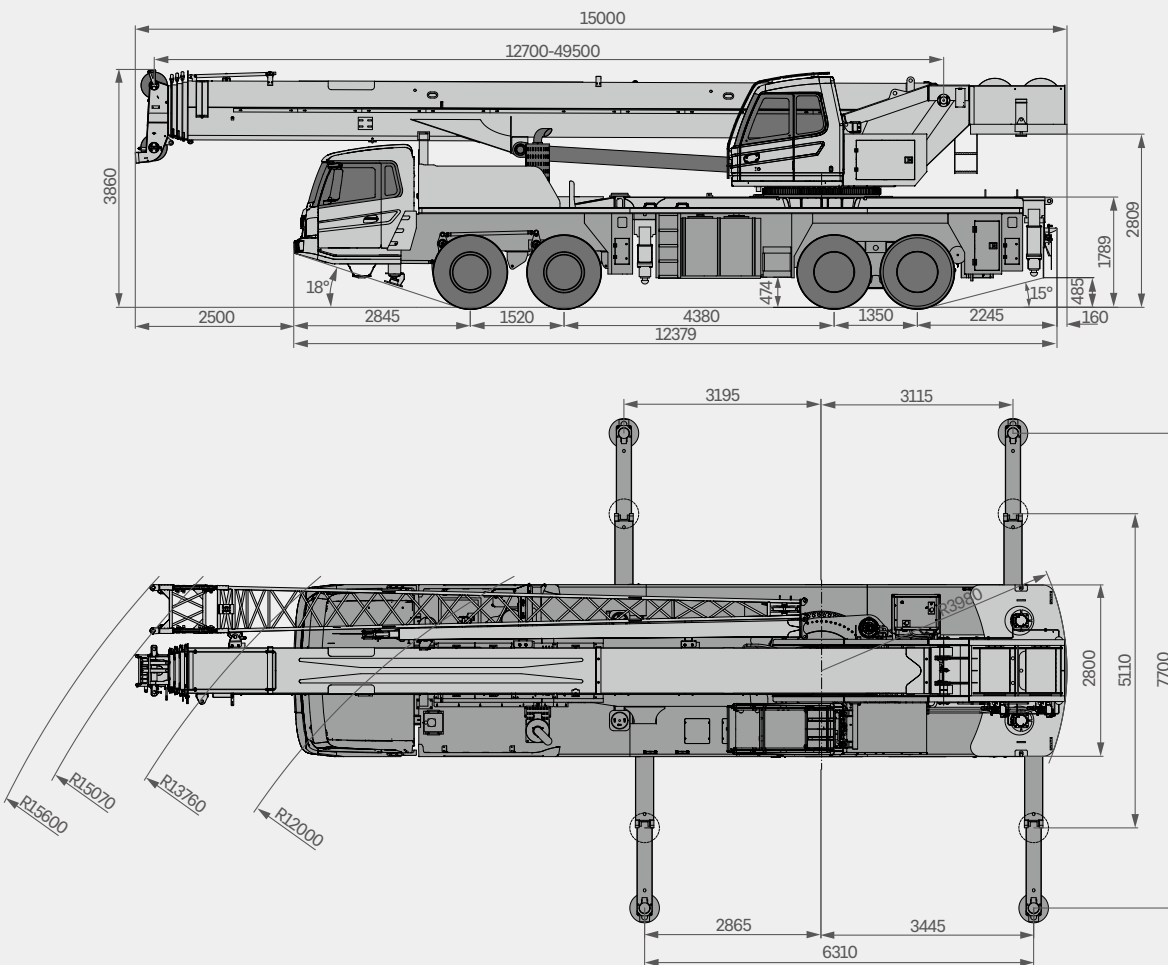
全新开发双泵智能流量分配系统,复合动作平稳性提升 50% 以上。卷扬单绳最低速度小于 $1.5\text{m}/\text{min}$, 回转最低稳定速度小于 $0.15^\circ/\text{s}$, 轻松实现毫米级吊装。电控系统, 上车吊装综合节能 15%, 重载作业效率提升 30%。



G-class chassis, adaptable for multiple road conditions. Power train perfect combo of DF Cummins large torque engine and 10-speed manual transmission with emergency steering. Front axles equipped with big size disc brake, braking torque raised by 25%, less heat generated, making the brake system more reliable.

G 类底盘, 通过性能好, 双桥驱动。
动力链黄金配比, 东康大扭矩发动机, 10 档手动带应急转向变速箱。
前桥配置全新大尺寸盘式制动器, 制动力矩加大 25%, 发热少, 更可靠。

Overall Dimensions 整机尺寸图



Technical Specification 主要性能参数

CATEGORY 类型	ITEM 项目	UNIT 单位	VALUE 参数	
CAPACITY 额定起重量	Max. lifting capacity 最大起重量	t	80	
WEIGHT 重量参数	Gross weight 整机总质量	kg	45000 (without jib 不带副臂)	
POWER 发动机参数	Engine model 发动机型号 (排放标准)	-	DF CUMMINS ISLe375 30 (Euro III) 东风康明斯 ISLe375 30(欧 III)	
	Max. engine power 发动机最大功率	kW/rpm	275/2100	
	Max. engine torque 发动机最大输出扭矩	N · m/rpm	1550/1200	
DIMENSIONS 尺寸参数	Overall length 整机全长	mm	15000	
	Overall width 整机全宽	mm	2800	
	Overall height 整机全高	mm	3860	
TRAVEL 行驶参数	Max. travel speed 最高行驶速度	km/h	90	
	Steering radius 转弯半径	Min.steering radius 最小转弯半径	m	12
		Min.steering radius of boom tip 臂头最小转弯半径	m	15.6
	Wheel formula 车轮模式	-	8 × 4	
	Min.ground clearance 最小离地间隙	mm	340	
	Approach angle 接近角	°	18	
	Departure angle 离去角	°	15	
	Max.gradeability 最大爬坡度	-	45%	
	Fuel consumption per 100km 每 100 公里油耗	L	≤42	
	MAIN PERFORMANCE 主要性能参数	Working temperature range 使用温度区间	°C	-25~+45
Min.rated lifting radius 最小额定幅度		m	2.7	
Tail slewing radius 转台尾部回转半径		mm	3.98	
Boom sections (Qty.) 臂节数		-	5	
Boom shape 臂形状		-	U shape U 形	
Max.lifting moment 最大起重力矩		Basic boom 基本臂	kN · m	2881
		Full-extension boom 全伸主臂	kN · m	1536
		Full-extension boom + jib 全伸主臂 + 副臂	kN · m	787
Boom length 臂长		Basic boom 基本臂	m	12.7
		Full-extension boom 全伸主臂	m	49.5
		Full-extension boom + jib 全伸主臂 + 副臂	m	67
Max.lifting height 最大起重高度		Basic boom 基本臂	m	13.2
		Full-extension boom 全伸主臂	m	50
	Full-extension boom + jib 全伸主臂 + 副臂	m	67	
Outrigger span (Longitudinal × Transverse) 支腿跨距 (纵 × 横)	m	6.31 × 7.7		
Jib offset 副臂安装角度	°	0, 15, 30		
AIRCONDITIONER 空调	In operator's cab 上车空调	-	Heating & cooling 制冷、制热 (LHD 左舵) Cooling 制冷 (RHD 右舵)	
	In driver's cab 下车空调	-	Heating & cooling 制冷、制热	

Technical Parameters 主要参数表



Axle Load 轴荷

Axle 轴	1	2	3	4	Gross weight 总重量
Axle load 轴荷 /t	9.5	9.5	13	13	45
Remark 备注	with 3t fixed counterweight, without jib 包含 3t 固定配重, 不带副臂				



Hook 吊钩

Rated load 额定 /t	Number of sheaves 滑轮数量	Rope rate 倍率	Hook weight 吊钩重量 /kg
55 ●	4	8	595
6.5 ●	1	1	140
65 ○	5	10	690
75 ○	6	12	800
75(Double eye hook) (双钩) ○	5	10	732

● Standard 标配 ○ Optional 选配



Operations 主要动作参数

Item 项目	Max.single rope lifting speed (empty load) 单绳速度 (空载)	Rope diameter/length 钢丝绳直径 / 长度	Max. single line pull 最大单绳拉力
Main winch 主卷扬	130m/min	20mm/245m	6.33t
Auxiliary winch 副卷扬	130m/min	20mm/145m	6.33t
Slewing speed 回转速度	0 ~ 1.7r/min		
Full luffing up/down time of boom 主臂起落幅时间	60s/90s		
Full extension/retraction time of boom 主臂伸缩时间	125s/140s		
Outrigger jack 垂直支腿	Retraction 收	35s	
	Extension 放	35s	
Outrigger beam 水平支腿	Retraction 收	25s	
	Extension 放	30s	

Crane Introduction 整机介绍

Carrier 下车

Driver's cab 驾驶室

- Self-developed integral steel structure cab in ergonomic design, featuring vibration and external noise isolation.
- The cab is furnished in concept of convenience, safety, and comfort with pneumatic seats, seat belt, adjustable steering wheel, large rearview mirror, seat with headrest, demister, AC, 7" multimedia terminal, standard berth, full set of controls and panels.
- 自主开发全宽钢整体式钢结构驾驶室，采用人体工程学原理设计，减震性和封闭性优良。
- 配备气动悬置的驾驶座与副驾座、三点安全带、可调整式的转向盘、大视野后视镜、配有头枕的舒适驾驶椅、防雾扇、空调、7寸多媒体娱乐终端等装备，控制仪器和仪表齐全。更加舒适、安全、人性化。

Carrier frame 车架

- Designed and manufactured by Sany, the box-type structure is expanded in height and length, with its rigidity increased by 30%, featuring increased bearing capacity.
- 三一设计、制造，采用矩形截面结构，车架加高加宽，相较槽型车架，刚性提升 30%，承载能力得到大幅提升。

Engine 发动机

- Model: DF Cummins Inline six-cylinder diesel engine with watercooler and inter cooler.
- Emission standard: Euro III.
- Fuel reservoir capacity: 400L.
- 型式：东风康明斯，直列六缸、水冷却、增压中冷、柴油发动机。
- 排放标准：欧 III。
- 燃料箱有效容积：400L。

Transmission 变速箱

- 10-speed manual transmission with synchronizer, large speed ratio range, adaptable to slope climbing and high-speed traveling.
- 手动带同步器变速箱，10 档，速比范围大，既可满足低速场地爬坡行驶，又可满足高速行驶。

Transmission shaft 传动轴

- Optimized layout, higher torque output via contrate gear connecting transmission shaft cardan.
- 优化的传动轴布置，传动轴传动平稳、可靠。最优优化力传输，采用端面齿联结传动轴，传递扭矩大。

Axle 车桥

- Axles 1, 2 are steered; axles 3, 4 are drive axles with built-in differential lock, realizing tougher ability to rough-terrain travelling. Two-stage reducer gear and smaller sized axle bags contribute to better trafficability. Press welding process strengthens the axle cover.
- 3、4 轴为驱动轴，1、2 轴为转向轴，驱动轴内置轴间和轮间差速器锁，使车辆有更强的脱困能力；双级减速，桥包体积更小，使车辆有更好的通过性；冲焊桥壳工艺，承载能力更强。

Suspension system 悬挂

- Front suspension is realized by independent leaf spring, and rear rubber. With leaf spring verified by 100,000 cycling fatigue tests, high strength and ride comfort are out of question.
- 前轴采用独立式钢板弹簧，中后轴采用橡胶悬架系统；板簧经过超过 10 万次的疲劳试验，保证强度的同时兼顾乘坐的舒适性。

Steering 转向系统

- Mechanical steering with large flow gearbox and hydro booster. Turn your steering wheel more easily.
- 1 轴 +2 轴采用液压助力机械转向，采用大流量转向器 + 转向助力油缸，大大减小转向阻力，转向更轻便。

Tires 轮胎

- Radial tires sized 325/95R24, universal choice for heavy-duty trucks.
- 子午线轮胎，325/95R24，广泛适用于重型汽车，通用性强。

Wheel formula 车轮模式

- 8 × 4

Outrigger 支腿

- H-type layout, four point support, easy to operate, outrigger beam hydraulically telescoping, jack telescoping protected by two-way pilot controlled valve.
- H 型支腿 4 点支撑，易操作、稳定性强；采用细晶粒高强度钢板材料，一、二级支腿全液压横向伸缩，支腿垂直油缸采用双向液压锁进行安全保护。

Brake 制动系统

- Air servo functions on all wheels with diagonally split system.
- Service brake: air servo, double circuit split; wedge brake and double air chambers functioning on front axles.
- Parking brake: functioning at axles 3 and 4 by spring in air chamber.
- Emergency brake: performed by accumulator releasing pressure.
- Assisting brake: engine exhaust brake, safety assured when driving down long slopes.
- 所有车轮均用空气伺服制动器，双回路制动系统，发动机带排气制动。
- 行车制动采用双回路制动系统，所有车轮均用空气伺服制动器，前桥采用楔式制动器 + 双气室，制动能力更强。
- 驻车制动是通过气室内弹簧作用在第三、四桥上。
- 应急制动阀由蓄能器储能断气制动兼做应急制动。
- 辅助制动为排气制动，保证在下长坡时的制动安全，保证行车的安全可靠。

Electrical system 电气系统

- 2*12V maintenance-free battery with a mechanical power switch, the overall power can be cut off manually. CAN instrument, data integration between superstructure and chassis.
- 2 × 12V 免维护蓄电池，拔出钥匙后自动切断整车电源；总线控制系统，可实现上下车信息交互。

Crane Introduction 整机介绍

Operator's cab 操纵室

- The cab is designed 0°~20° tiltable in ergonomic concept with deep consideration of convenience, safety, and comfort. Corrosion resistant bodywork with electric side step and softened interior trim. The skylight, adjustable seat, air conditioning, and electric windshield wiper make working on the crane more comfortable.
- 7" E-touch integrates data with central console, ensuring that operation conditions are well monitored from multiple angles in multiple images.
- 三一自主研发, 可 0-20° 可仰, 配置电控伸缩踏板, 采用安全玻璃, 耐腐蚀钢板, 配置全覆盖软化内饰、全景式天窗、可调式座椅等人性化设计, 配有加大冷暖空调、立体 6 通道送风系统、电动雨刮器, 操作更舒适、轻松; 配置 7 英寸触摸屏, 实现主控台与操作显示系统有机结合, 使吊装作业的全部工况数据一目了然。

Boom & telescoping system 伸缩系统

- Five sections of U shape cross section welded by high strength structural steel. Telescoping is realized by two cylinders with rope arranger.
- 五节臂, U 形截面, 由高强度焊接结构钢制成, 双缸 + 绳排伸缩方式。

Hoist 起升系统

- Efficient and energy saving speed regulation is realized via double variables of pump and motor. Normally closed type winch brake, winch balance valve coupled with exclusive anti-slip tech contribute to smoother hoisting.
- 泵、马达双变量调速, 高效节能。常闭式卷扬制动器, 卷扬平衡阀与独特的防溜钩技术完美结合, 重物起落平稳。

Luffing system 变幅系统

- Passive luffing down with electro proportional balance valve, reducing energy cost. One luffing cylinder with hinge positioned to the front, making motion easier and boom stress optimized. Luffing angle: -1.7°~80°.
- 自重落幅, 更加节能。采用单根油缸, 前较支布置, 变幅更省力且起重臂受力得到改善, 采用电比例控制平衡阀。变幅角度: -1.7°~80°。

Hydraulics 液压系统

- The all new smart double pump flow system lifts maneuverability of combined motions by 50%. The boom can luff at shunting mode and telescope at confluence mode.
- Load sensing variable piston pump can control flow in high precision, reducing energy loss significantly.
- Electrically controlled valve functions flow compensation and load sensing control, securing stable control over single and combined motions.
- 采用全新开发双泵智能流量系统, 变幅独立, 伸臂合流, 复合动作操控性提升 50% 以上;
- 采用负载敏感变量柱塞泵, 能实时调节油泵排量, 实现高精度的流量控制, 极大的降低能量损耗;
- 电控主阀具备流量补偿、负载反馈控制功能, 能在各种工况下, 轻松实现单个动作和组合动作的稳定控制;
- 卷扬采用电控变量马达, 高速效率高, 低速稳定噪音小; 主副卷扬单绳最大速度达 130m/min

Slewing 回转系统

- Stepless speed regulation. Close type system reduces energy loss. Emergency brake available.
- 带集成回转缓冲阀, 具有自由滑转功能, 回转启动和控制平稳, 微动性卓越。

Control system 控制系统

- CAN-BUS instrument: integral electrical system control. Get the data any time and drive easily.
- LMI: highly intelligent load moment indicator providing all-round protection.
- 7" E-touch: main parameters of working conditions are displayed clearly. I/O and maintenance display is provided for your quick mastering of whole machine conditions.
- Fault self-diagnosis: reliable functioning of the crane is guaranteed by pre-troubleshooting of electric system, hydraulics, chassis (for major safety malfunctioning), engine and transmission.
- 总线仪表: 采用集成一体智能控制电气系统的总线仪表, 可随时掌控行驶参数, 驾乘轻松;
- 力矩限制器: 采用高度智能力矩限制器系统, 全方位保护吊载作业;
- 7 英寸显示屏: 基本界面上显示工况基本参数, 清晰易懂, 增设 I/O 界面, 检修界面等多项功能, 能快速反映整车系统的工作状况;
- 故障自诊断系统: 对上车电气、液压动作、底盘 (针对重大安全故障)、发动机及变速箱等故障进行检测, 以保证起重机可靠工作。

Counterweight 配重

- Fixed and movable counterweight features 3 combinations: 3t, 5.5t, 10t, satisfying demand of various working conditions. CW assembly and disassembly controlled by remote device. This new crane can drive on jobsites at low speed with 15t CW on board.
- 组合式可变配重, 3t、5.5t、10t 共 3 种组合方式, 可满足不同工况的需求, 可带 15t 配重低速转场。最大限度发挥结构件性能, 可遥控拆卸及安装, 微动性好。

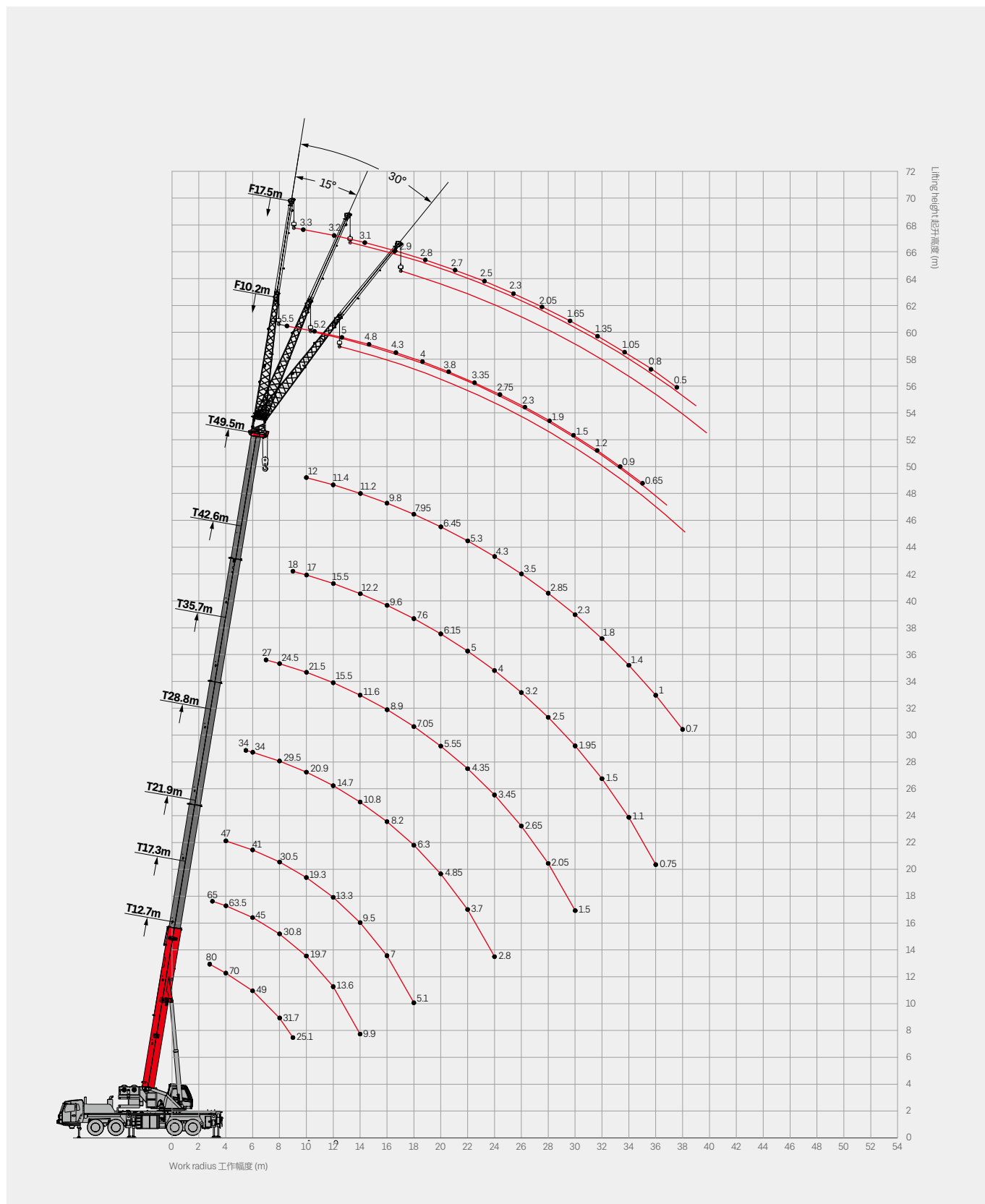
Safety equipment 安全装置

- Self-developed LMI.
- Hydraulic balance valve, relief valve, two-way pilot-controlled valve.
- Three-circle protector at main and aux. winches, preventing wire rope from over-hoist down.
- Height limit switch at head of boom and fixed jib, preventing wire rope from over-hoist up.
- An all-round safety system covers load moment (LMI), hydraulics, winch, and wire rope. Motion of risks are cut off automatically with buzzer warning.
- 力矩限制器: 采用分析力学方法, 建立了基于吊重力学模型的力矩限制器计算系统, 通过在线空载标定, 额定吊重精度达到 $\pm 3\%$, 全方位保护吊载作业; 超载作业时, 系统自动报警提示, 为操纵作业提供安全保障;
- 液压系统配置液压平衡阀、溢流阀、双向液压锁等元件, 实现液压系统稳定可靠;
- 主、副卷扬配置三圈保护器, 防止钢丝绳过放;
- 主、副臂端配置高度限位器, 防止钢丝绳过卷;
- 配置长度角度传感器、压力传感器, 实时显示起重机作业状态, 自动切断危险动作, 蜂鸣报警

Optional equipment at extra fees 选配

- 5t movable CW (1 pc or 2 pcs) / 65t main hook / 75t single eye hook
- 75t double eye hook / Heating in operator's cab (RHD)
- Anemometer / Outrigger pad
- Special painting / Other equipment available upon request
- 加 1 块或 2 块 5t 活动配重 / 65t 主钩 / 75t 主钩 / 75t 锚钩 / 右舵操纵室暖风
- 风速仪 / 支腿垫板 / 特殊涂装 / 其他选配视需求定

Operating Range 起升高度



Load Chart-Telescopic Boom 主臂性能表 Optional 选配



Unit: kg

Radius (m) 幅度	12.7	17.3	21.9	28.8	35.7	42.6	49.5	19.6	26.5	33.4	40.3	24.2	31.1	38.0	44.9	Radius (m) 幅度
2.7	80000															2.7
3	75000	65000														3
3.5	73000	64000						34000								3.5
4	70000	63500	47000					34000								4
4.5	65000	59500	47000					33500				34000				4.5
5	60500	55000	45000					33500	30500			34000				5
5.5	54500	50000	43000	34000				33000	30000			34000				5.5
6	49500	46000	41000	34000				32500	29000	22000		34000	29000			6
6.5	45500	43000	39500	33000				32000	27500	21000		33500	28000			6.5
7	42000	40000	38000	32000	27000			31500	26000	20000		33000	27500			7
7.5	38500	37500	35500	30000	25500			31000	25000	19500		32500	26500	19000		7.5
8	35000	35000	33000	29500	24500			30500	24500	19000	16000	32000	26000	19000		8
9	30000	29500	29000	26800	23000	18000		28800	23000	17500	15000	30500	25500	18500	14500	9
10		26000	25500	24300	21500	17000	12000	25800	21500	15900	14000	26600	24000	17500	14000	10
11		22500	22000	22200	19600	16500	11700	23200	19700	14600	13000	23500	22500	16500	13000	11
12		19200	18800	20200	18200	15500	11400	21200	18200	13600	12000	20600	20200	15500	12500	12
14		14200	14000	15400	15400	14500	11200	16300	15000	11700	10500	15800	16500	14000	11500	14
16			10800	12000	12800	12000	10600	13000	13000	10300	9300	12400	13200	12200	10500	16
18			8300	9650	10300	10700	9500		11000	9100	8300	10000	10700	10800	9500	18
20				7800	8500	9000	8400		9400	8100	7500	8100	8900	9400	8700	20
22				6300	7000	7500	7600		7900	7200	6900		7400	7900	7900	22
24				5200	5850	6300	6600			6500	6300		6200	6700	7050	24
26					4900	5300	5800			5900	5700		5200	5700	6050	26
28					4050	4500	4900			5400	5200			4900	5200	28
30					3350	3800	4200					4800		4200	4500	30
32						3200	3500					4300		3600	3900	32
34						2650	3000					3800			3400	34
36						2150	2550								2900	36
38							2150								2500	38
40							1750									40
42							1400									42
Telescoping status 伸缩模式																
Cylinder I 一号缸	0%	50%	100%	100%	100%	100%	100%	0%	0%	0%	0%	50%	50%	50%	50%	Cylinder I 一号缸
Cylinder II 二号缸	0%	0%	0%	25%	50%	75%	100%	25%	50%	75%	100%	25%	50%	75%	100%	Cylinder II 二号缸
Rope rate 钢丝绳倍率	12	11	8	6	5	3	3	6	5	4	3	6	5	3	3	Rope rate 钢丝绳倍率

Load Chart-Telescopic Boom 主臂性能表

Optional 选配



Unit: kg

Radius (m) 幅度	12.7	17.3	21.9	28.8	35.7	42.6	49.5	19.6	26.5	33.4	40.3	24.2	31.1	38.0	44.9	Radius (m) 幅度
2.7	80000															2.7
3	75000	65000														3
3.5	73000	64000						34000								3.5
4	70000	63500	47000					34000								4
4.5	65000	59500	47000					33500				34000				4.5
5	60500	55000	45000					33500	30500			34000				5
5.5	54500	50000	43000	34000				33000	30000			34000				5.5
6	49500	46000	41000	34000				32500	29000	22000		34000	29000			6
6.5	45500	43000	39500	33000				32000	27500	21000		33500	28000			6.5
7	41000	40000	38000	32000	27000			31500	26000	20000		33000	27500			7
7.5	37500	36500	35000	30000	25500			31000	25000	19500		32500	26500	19000		7.5
8	34000	34000	32500	29500	24500			30500	24500	19000	16000	32000	26000	19000		8
9	29000	28100	28000	26800	23000	18000		28800	23000	17500	15000	30200	25500	18500	14500	9
10		23000	22800	24300	21500	17000	12000	25600	21500	15900	14000	24800	24000	17500	14000	10
11		19300	19000	20500	19600	16500	11700	21500	19700	14600	13000	21000	21800	16500	13000	11
12		16300	16000	17500	18200	15500	11400	18500	18200	13600	12000	18000	18600	15500	12500	12
14		12000	11700	13000	13900	14500	11200	14000	15000	11700	10500	13500	14200	14000	11500	14
16			8800	10100	10800	11500	10600	11000	11800	10300	9300	10500	11200	11800	10500	16
18			6600	7900	8700	9100	9500		9600	9100	8300	8350	9000	9500	9500	18
20				6250	7000	7500	8000		7900	8100	7500	6700	7400	7900	8200	20
22				4950	5650	6200	6600		6600	7000	6900		6050	6550	6900	22
24				3900	4600	5100	5500			6000	6200		5050	5500	5800	24
26					3700	4300	4600			5100	5300		4150	4600	4900	26
28					3000	3500	3850			4300	4600			3900	4200	28
30					2350	2800	3200				3900			3250	3550	30
32						2300	2650				3450			2700	3000	32
34						1800	2200				2900				2550	34
36						1400	1750								2100	36
38							1400								1750	38
40							1100									40
42							800									42
Telescoping status 伸缩模式																
Cylinder I 一号缸	0%	50%	100%	100%	100%	100%	100%	0%	0%	0%	0%	50%	50%	50%	50%	Cylinder I 一号缸
Cylinder II 二号缸	0%	0%	0%	25%	50%	75%	100%	25%	50%	75%	100%	25%	50%	75%	100%	Cylinder II 二号缸
Rope rate 钢丝绳倍率	12	11	8	6	5	3	3	6	5	4	3	6	5	3	3	Rope rate 钢丝绳倍率

Load Chart-Telescopic Boom 主臂性能表



Unit: kg

Radius (m) 幅度	12.7	17.3	21.9	28.8	35.7	42.6	49.5	19.6	26.5	33.4	40.3	24.2	31.1	38.0	44.9	Radius (m) 幅度
2.7	80000															2.7
3	75000	65000														3
3.5	73000	64000						34000								3.5
4	70000	63500	47000					34000								4
4.5	63500	59500	47000					33500				34000				4.5
5	58000	55000	45000					33500	30500			34000				5
5.5	53000	50000	43000	34000				33000	30000			34000				5.5
6	49000	45000	41000	34000				32500	29000	22000		34000	29000			6
6.5	44000	41500	39500	33000				32000	27500	21000		33500	28000			6.5
7	39000	38500	38000	32000	27000			31500	26000	20000		33000	27500			7
7.5	36100	35200	34900	30000	25500			31000	25000	19500		32500	26500	19000		7.5
8	31700	30800	30500	29500	24500			30500	24500	19000	16000	32000	26000	19000		8
9	25100	24300	24000	25600	23000	18000		26900	23000	17500	15000	26100	25500	18500	14500	9
10		19700	19300	20900	21500	17000	12000	22200	21500	15900	14000	21400	22400	17500	14000	10
11		16300	15900	17400	18300	16500	11700	18600	19500	14600	13000	18000	18800	16500	13000	11
12		13600	13300	14700	15500	15500	11400	16000	16700	13600	12000	15300	16100	15500	12500	12
14		9900	9500	10800	11600	12200	11200	12000	12800	11700	10500	11400	12200	12800	11500	14
16			7000	8200	8900	9600	9800	9400	10100	10300	9300	8700	9500	10000	10300	16
18			5100	6300	7050	7600	7950		8100	8500	8300	6800	7500	8100	8400	18
20				4850	5550	6150	6450		6600	7000	7300	5300	6050	6550	6850	20
22				3700	4350	5000	5300		5450	5850	6100		4900	5350	5700	22
24				2800	3450	4000	4300			4900	5100		3900	4400	4700	24
26					2650	3200	3500			4100	4300		3100	3600	3900	26
28					2050	2500	2850			3400	3650			2950	3200	28
30					1500	1950	2300				3100			2400	2650	30
32						1500	1800				2600			1900	2200	32
34						1100	1400				2200				1750	34
36						750	1000								1400	36
38							700								1100	38
Telescoping status 伸缩模式																
Cylinder I 一号缸	0%	50%	100%	100%	100%	100%	100%	0%	0%	0%	0%	50%	50%	50%	50%	Cylinder I 一号缸
Cylinder II 二号缸	0%	0%	0%	25%	50%	75%	100%	25%	50%	75%	100%	25%	50%	75%	100%	Cylinder II 二号缸
Rope rate 钢丝绳倍率	12	11	8	6	5	3	3	6	5	4	3	6	5	3	3	Rope rate 钢丝绳倍率

Load Chart-Telescopic Boom 主臂性能表



Unit: kg

Radius (m) 幅度	12.7	17.3	21.9	28.8	35.7	42.6	49.5	19.6	26.5	33.4	40.3	24.2	31.1	38.0	44.9	Radius (m) 幅度
2.7	80000															2.7
3	75000	65000														3
3.5	73000	64000						34000								3.5
4	69000	63500	47000					34000								4
4.5	62000	59500	47000					33500				34000				4.5
5	56000	55000	45000					33500	30500			34000				5
5.5	52000	50000	43000	34000				33000	30000			34000				5.5
6	46500	43500	41000	34000				32500	29000	22000		34000	29000			6
6.5	42000	40000	39500	33000				32000	27500	21000		33500	28000			6.5
7	36100	35200	34800	32000	27000			31500	26000	20000		33000	27500			7
7.5	31100	30300	29800	30000	25500			31000	25000	19500		32200	26500	19000		7.5
8	27200	26400	26000	27700	24500			29200	24500	19000	16000	28300	26000	19000		8
9	21400	20600	20200	21900	22800	18000		23200	23000	17500	15000	22400	23400	18500	14500	9
10		16600	16200	17700	18700	17000	12000	19000	19900	15900	14000	18300	19200	17500	14000	10
11		13600	13200	14700	15600	16000	11700	15900	16700	14600	13000	15200	16100	16500	13000	11
12		11300	10900	12300	13200	13800	11400	13500	14300	13600	12000	12800	13700	14300	12500	12
14		7900	7600	8900	9700	10300	10600	10100	10800	11300	10500	9400	10200	10800	11000	14
16			5200	6500	7300	7900	8300	7650	8400	8900	9300	7000	7800	8300	8700	16
18			3500	4800	5500	6100	6450		6600	7000	7350	5200	6000	6500	6850	18
20				3500	4200	4700	5100		5250	5650	5950	3900	4650	5150	5500	20
22				2500	3150	3700	4000		4200	4600	4900		3600	4100	4400	22
24				1650	2300	2850	3150			3750	4000		2800	3250	3550	24
26					1700	2150	2450			3050	3300		2100	2550	2850	26
28					1100	1600	1900			2500	2700			2000	2300	28
30					650	1100	1400				2200			1500	1800	30
32						700	1000				1800			1100	1350	32
34							650				1450				1000	34
36															700	36
38																38
Telescoping status 伸缩模式																
Cylinder I 一号缸	0%	50%	100%	100%	100%	100%	100%	0%	0%	0%	0%	50%	50%	50%	50%	Cylinder I 一号缸
Cylinder II 二号缸	0%	0%	0%	25%	50%	75%	100%	25%	50%	75%	100%	25%	50%	75%	100%	Cylinder II 二号缸
Rope rate 钢丝绳倍率	12	11	8	6	5	3	3	6	5	4	3	6	5	3	3	Rope rate 钢丝绳倍率

Load Chart-Telescopic Boom 主臂性能表



Unit: kg

Radius (m) 幅度	12.7	17.3	21.9	28.8	35.7	42.6	49.5	19.6	26.5	33.4	40.3	24.2	31.1	38.0	44.9	Radius (m) 幅度
2.7	80000															2.7
3	75000	65000														3
3.5	73000	64000						34000								3.5
4	69000	63500	47000					34000								4
4.5	62000	59500	47000					33500				34000				4.5
5	56000	55000	45000					33500	30500			34000				5
5.5	51000	50000	43000	34000				33000	30000			34000				5.5
6	45500	43000	41000	34000				32500	29000	22000		34000	29000			6
6.5	39000	38000	37500	33000				32000	27500	21000		33500	28000			6.5
7	33000	32000	31700	32000	27000			31500	26000	20000		33000	27500			7
7.5	28000	27500	27100	29000	25500			30500	25000	19500		29600	26500	19000		7.5
8	24500	24000	23500	25500	24500			26600	24500	19000	16000	25900	26000	19000		8
9	19300	18600	18200	19800	20800	18000		21200	22100	17500	15000	20400	21500	18500	14500	9
10		14900	14500	16000	17000	17000	12000	17300	18200	15900	14000	16600	17500	17500	14000	10
11		12100	11700	13200	14200	14800	11700	14500	15300	14600	13000	13700	14600	15200	13000	11
12		10000	9600	11000	12000	12500	11400	12300	13000	13500	12000	11500	12400	13000	12500	12
14		6700	6400	7600	8600	9200	9600	8900	9700	10200	10500	8200	9000	9700	10000	14
16			4200	5400	6300	6900	7300	6600	7350	7800	8200	5900	6700	7300	7700	16
18			2600	3800	4600	5300	5600		5700	6100	6500	4300	5100	5700	6000	18
20				2600	3400	4000	4400		4450	4850	5200	3100	3800	4400	4700	20
22				1700	2500	3000	3400		3500	3850	4200		2900	3400	3700	22
24				950	1700	2250	2550			3100	3400		2150	2600	2900	24
26					1100	1600	1900			2500	2700		1500	2000	2300	26
28						1050	1400			1900	2200			1450	1700	28
30							950					1700		1000	1300	30
32												1300			900	32
34												1000				34
36																36
38																38
Telescoping status 伸缩模式																
Cylinder I 一号缸	0%	50%	100%	100%	100%	100%	100%	0%	0%	0%	0%	50%	50%	50%	50%	Cylinder I 一号缸
Cylinder II 二号缸	0%	0%	0%	25%	50%	75%	100%	25%	50%	75%	100%	25%	50%	75%	100%	Cylinder II 二号缸
Rope rate 钢丝绳倍率	12	11	8	6	5	3	3	6	5	4	3	6	5	3	3	Rope rate 钢丝绳倍率

Load Chart-Telescopic Boom 主臂性能表

Optional 选配



Unit: kg

Radius (m) 幅度	12.7	17.3	21.9	28.8	35.7	42.6	49.5	19.6	26.5	33.4	40.3	24.2	31.1	38.0	44.9	Radius (m) 幅度
3	65000	56000														3
3.5	55000	52000						34000								3.5
4	48000	47000	44000					34000								4
4.5	44000	41000	41000					33500				34000				4.5
5	41000	39000	37000					33500	30500			34000				5
5.5	39000	37000	34000	34000				33000	30000			34000				5.5
6	35000	31000	31000	34000				32500	29000	22000		34000	29000			6
6.5	33000	28000	28000	33000				31500	27500	21000		33500	28000			6.5
7	30000	26000	26000	32000	26500			30000	26000	20000		33000	27000			7
7.5	28000	24000	23000	28800	25000			28000	25000	19500		29400	26000	19000		7.5
8	25000	22000	21000	25500	24000			26000	24500	19000	16000	26100	24000	19000		8
9	20000	19000	18200	20700	21000	18000		22000	22500	17500	15000	21000	22000	18500	14500	9
10		16200	15800	17100	18000	17000	12000	18300	19100	15900	14000	17600	18500	17500	14000	10
11		13500	13200	14500	15200	15800	11700	15500	16400	14600	13000	14800	15800	16300	13000	11
12		11300	11000	12300	13000	13600	11500	13400	14200	13600	12000	12700	13500	14100	12500	12
14		8200	7900	9100	9800	10500	10800	10100	10800	11300	10500	9500	10200	10800	11200	14
16			5700	6800	7500	8200	8500	7900	8500	9000	9300	7300	8000	8500	8800	16
18			4100	5200	5900	6400	6800		6900	7300	7600	5600	6300	6800	7100	18
20				3900	4600	5100	5500		5600	6000	6200	4300	5000	5500	5800	20
22				2900	3600	4100	4500		4500	4900	5200		4000	4500	4800	22
24				2100	2700	3200	3600			4100	4400		3200	3600	3900	24
26					2100	2550	2900			3400	3700		2500	2900	3200	26
28					1500	2000	2300			2800	3100			2350	2600	28
30					1000	1500	1800				2600			1850	2100	30
32						1000	1300				2100			1400	1700	32
34						700	900				1800				1300	34
36							650								950	36
38															700	38
Telescoping status 伸缩模式																
Cylinder I 一号缸	0%	50%	100%	100%	100%	100%	100%	0%	0%	0%	0%	50%	50%	50%	50%	Cylinder I 一号缸
Cylinder II 二号缸	0%	0%	0%	25%	50%	75%	100%	25%	50%	75%	100%	25%	50%	75%	100%	Cylinder II 二号缸
Rope rate 钢丝绳倍率	12	11	8	6	5	3	3	6	5	4	3	6	5	3	3	Rope rate 钢丝绳倍率

Load Chart-Telescopic Boom 主臂性能表 Optional 选配



Unit: kg

Radius (m) 幅度	12.7	17.3	21.9	28.8	35.7	42.6	49.5	19.6	26.5	33.4	40.3	24.2	31.1	38.0	44.9	Radius (m) 幅度
3	65000	56000														3
3.5	55000	52000						34000								3.5
4	48000	47000	44000					34000								4
4.5	44000	41000	41000					33500				34000				4.5
5	41000	39000	37000					33500	30500			34000				5
5.5	39000	37000	34000	34000				33000	30000			34000				5.5
6	33000	31000	31000	32000				32500	29000	22000		33500	29000			6
6.5	30000	28000	28000	29500				31500	27500	21000		30500	28000			6.5
7	26000	24000	24000	25500	25500			28000	26000	20000		26000	27000			7
7.5	23000	21000	21000	22500	24000			25000	24500	19500		24000	25000	19000		7.5
8	20000	19000	18500	19500	21000			22000	22500	19000	16000	21000	22000	18500		8
9	17000	16500	16000	17500	18400	16500		18600	19500	17500	15000	18000	18700	18000	14500	9
10		13400	13000	14000	15200	15000	12000	15500	16300	15500	14000	14600	15500	16000	14000	10
11		11000	10700	11600	12800	13000	11500	13000	13800	13500	13000	12400	13100	13600	13000	11
12		9200	8850	9800	10900	11500	11000	11000	11800	12000	11500	10500	11200	11500	12000	12
14		6450	6150	7200	8100	8600	9000	8300	9100	9400	9200	7700	8400	9000	9100	14
16			4150	5400	6100	6600	7000	6300	7100	7500	7500	5800	6500	7000	7300	16
18			2800	3900	4600	5100	5500		5600	6000	6300	4200	5000	5500	5800	18
20				2800	3500	4000	4300		4500	4900	5100	3100	3900	4400	4700	20
22				1900	2600	3100	3400		3500	3950	4200		3000	3450	3750	22
24				1200	1900	2350	2600			3200	3400		2300	2700	3000	24
26					1300	1700	2000			2600	2800		1650	2100	2400	26
28					800	1200	1500			2050	2300			1600	1900	28
30						750	1100					1900			1150	30
32							650					1500		800	1050	32
34												1100			650	34
36																36
38																38
Telescoping status 伸缩模式																
Cylinder I 一号缸	0%	50%	100%	100%	100%	100%	100%	0%	0%	0%	0%	50%	50%	50%	50%	Cylinder I 一号缸
Cylinder II 二号缸	0%	0%	0%	25%	50%	75%	100%	25%	50%	75%	100%	25%	50%	75%	100%	Cylinder II 二号缸
Rope rate 钢丝绳倍率	12	11	8	6	5	3	3	6	5	4	3	6	5	3	3	Rope rate 钢丝绳倍率

Load Chart-Telescopic Boom 主臂性能表



Unit: kg

Radius (m) 幅度	12.7	17.3	21.9	28.8	35.7	42.6	49.5	19.6	26.5	33.4	40.3	24.2	31.1	38.0	44.9	Radius (m) 幅度	
3	65000	56000														3	
3.5	55000	52000						34000								3.5	
4	48000	47000	44000					34000								4	
4.5	44000	41000	39500					33500				34000				4.5	
5	40000	38000	36000					33500	30500			34000				5	
5.5	36000	35000	33000	34000				33000	30000			34000				5.5	
6	30000	29000	29000	32000				32500	29000	22000		32300	29000			6	
6.5	26000	25000	25000	27000				28500	27500	21000		27500	28000			6.5	
7	22000	22000	21000	23000	24000			24500	25500	20000		23800	24800			7	
7.5	19500	19000	18500	20000	21000			21500	22500	19500		20800	21800	19000		7.5	
8	17200	16500	16000	17500	18500			19200	20000	18500	16000	18400	19300	18000		8	
9	13700	13000	12500	14000	15000	15800		15300	16200	16900	15000	14700	15600	16200	14500	9	
10		10200	10000	11500	12200	13000	11200	12500	13400	14000	14000	11800	12800	13400	13800	10	
11		8400	8100	9300	10100	10800	10800	10500	11300	11800	11800	9800	10700	11300	11600	11	
12		6800	6500	7800	8600	9100	9500	8900	9600	10100	10500	8200	9000	9600	10000	12	
14		4500	4200	5400	6100	6700	7000	6500	7200	7600	7900	5800	6600	7100	7400	14	
16			2500	3700	4400	5000	5300	4800	5400	5800	6100	4100	4800	5400	5700	16	
18			1300	2500	3100	3700	4000		4100	4500	4800	2900	3600	4100	4400	18	
20				1500	2200	2700	3000		3200	3500	3800	1900	2600	3100	3400	20	
22				850	1400	1950	2200		2400	2800	3050		1850	2300	2600	22	
24					850	1300	1600			2150	2400		1250	1700	2000	24	
26						850	1100			1600	1850		750	1150	1450	26	
28							700				1150	1450			750	1000	28
30												1050				650	30
32												750					32
34																	34
36																	36
38																	38

Telescoping status 伸缩模式

Cylinder I 一号缸	0%	50%	100%	100%	100%	100%	100%	0%	0%	0%	0%	50%	50%	50%	50%	Cylinder I 一号缸
Cylinder II 二号缸	0%	0%	0%	25%	50%	75%	100%	25%	50%	75%	100%	25%	50%	75%	100%	Cylinder II 二号缸
Rope rate 钢丝绳倍率	12	11	8	6	5	3	3	6	5	4	3	6	5	3	3	Rope rate 钢丝绳倍率

Load Chart-Telescopic Boom 主臂性能表



Unit: kg

Radius (m) 幅度	12.7	17.3	21.9	28.8	35.7	42.6	49.5	19.6	26.5	33.4	40.3	24.2	31.1	38.0	44.9	Radius (m) 幅度
3	65000	56000														3
3.5	55000	52000						34000								3.5
4	48000	47000	44000					34000								4
4.5	43000	40000	39500					33500				34000				4.5
5	38000	37500	36000					33500	30500			34000				5
5.5	31000	30000	29500	31800				33000	30000			32300				5.5
6	25500	24800	24300	26200				27700	28500	22000		26800	27500			6
6.5	21500	20800	20400	22100				23600	24500	21000		22700	23800			6.5
7	18500	17700	17300	19000	20000			20400	21300	20000		19500	20600			7
7.5	16000	15200	14900	16500	17400			17800	18700	18500		17000	18000	18500		7.5
8	14000	13200	12900	14400	15300			15700	16600	17100	16000	14900	15900	16500		8
9	10800	10200	9800	11200	12100	12800		12500	13300	13800	13500	11700	12600	13300	13500	9
10		7900	7500	8900	9800	10400	10900	10100	10900	11400	11700	9400	10200	10900	11200	10
11		6200	5850	7200	8000	8600	9000	8300	9100	9500	9900	7600	8400	9000	9400	11
12		4850	4500	5800	6550	7100	7500	6900	7600	8100	8400	6200	7000	7600	7900	12
14		2850	2500	3700	4500	5000	5400	4800	5500	5900	6200	4200	4950	5450	5800	14
16			1100	2300	3000	3500	3900	3350	4000	4400	4700	2700	3450	4000	4300	16
18				1250	1950	2400	2800		2900	3300	3600	1650	2350	2950	3150	18
20					1100	1600	1900		2100	2500	2700	950	1550	2000	2300	20
22						1000	1250		1400	1800	2050		950	1300	1600	22
24							750			1250	1500			850	1050	24
26										850	1050				700	26
28											750					28
30																30
32																32
34																34
36																36
38																38
Telescoping status 伸缩模式																
Cylinder I 一号缸	0%	50%	100%	100%	100%	100%	100%	0%	0%	0%	0%	50%	50%	50%	50%	Cylinder I 一号缸
Cylinder II 二号缸	0%	0%	0%	25%	50%	75%	100%	25%	50%	75%	100%	25%	50%	75%	100%	Cylinder II 二号缸
Rope rate 钢丝绳倍率	12	11	8	6	5	3	3	6	5	4	3	6	5	3	3	Rope rate 钢丝绳倍率

Load Chart-Telescopic Boom 主臂性能表



Unit: kg

Radius (m) 幅度	12.7	17.3	21.9	28.8	35.7	42.6	49.5	19.6	26.5	33.4	40.3	24.2	31.1	38.0	44.9	Radius (m) 幅度
3	65000	56000														3
3.5	55000	52000						34000								3.5
4	48000	47000	44000					34000								4
4.5	43000	40000	39500					33500				34000				4.5
5	34300	33300	32800					33500	30500			34000				5
5.5	27400	26500	26100	28200				29700	29500			28700				5.5
6	22600	21700	21300	23200				24700	25800	22000		23700	25000			6
6.5	18900	18100	17700	19500				21000	22000	20500		20000	21200			6.5
7	16100	15300	14900	16600	17700			18000	19000	19000		17100	18200			7
7.5	13900	13100	12700	14300	15300			15700	16600	17200		14800	15900	16600		7.5
8	12000	11300	10900	12500	13400			13800	14600	15200	15500	13000	13900	14600		8
9	9200	8500	8200	9650	10500	11200		10800	11700	12200	12600	10100	11000	11600	12100	9
10		6500	6150	7550	8350	9000	9500	8700	9500	10000	10300	8000	8800	9400	9800	10
11		4900	4600	5900	6750	7350	7700	7100	7800	8300	8650	6400	7200	7800	8100	11
12		3750	3400	4700	5450	6050	6400	5800	6500	7000	7350	5100	5900	6500	6800	12
14		1950	1600	2800	3600	4150	4500	3900	4600	5100	5350	3250	4000	4500	4900	14
16				1550	2250	2800	3100	2600	3250	3700	4000	1950	2700	3200	3500	16
18				650	1250	1800	2100		2250	2650	2950	1050	1700	2200	2500	18
20					600	1050	1350		1500	1900	2200		1000	1400	1700	20
22							800		950	1300	1550			900	1100	22
24										850	1050				600	24
26											700					26
28																28
30																30
32																32
34																34
36																36
38																38
Telescoping status 伸缩模式																
Cylinder I 一号缸	0%	50%	100%	100%	100%	100%	100%	0%	0%	0%	0%	50%	50%	50%	50%	Cylinder I 一号缸
Cylinder II 二号缸	0%	0%	0%	25%	50%	75%	100%	25%	50%	75%	100%	25%	50%	75%	100%	Cylinder II 二号缸
Rope rate 钢丝绳倍率	12	11	8	6	5	3	3	6	5	4	3	6	5	3	3	Rope rate 钢丝绳倍率

Load Chart-Jib 副臂性能表

Optional 选配



Unit: kg

Boom angle (°) 主臂仰角	49.5+10.2			49.5+17.5			Boom angle (°) 主臂仰角
	0°	15°	30°	0°	15°	30°	
80	5500	3800	3300	3300	2200	1500	80
78	5200	3700	3100	3200	2100	1400	78
76	5000	3600	2900	3100	2000	1400	76
74	4800	3500	2700	2900	2000	1400	74
72	4300	3300	2700	2800	1900	1300	72
70	4000	3100	2600	2700	1700	1300	70
68	3800	3000	2500	2500	1600	1300	68
66	3600	2900	2400	2300	1500	1200	66
64	3300	2700	2300	2100	1500	1200	64
62	3050	2500	2200	1950	1500	1100	62
60	2800	2350	2050	1800	1400	1050	60
58	2600	2200	1900	1700	1400	1000	58
56	2400	2050	1800	1600	1300	950	56
54	2200	1900	1700	1500	1200	900	54
52	2000	1800	1600	1400	1150	860	52
50	1750	1650	1500	1300	1100	830	50
48	1500	1450	1350	1200	1050	800	48
46	1300	1250	1200	1100	1000	770	46
44	1150	1100	1100	1000	950	750	44
42	1050	1000	950	800	750	700	42
40	900	850	800	650	600	600	40
38	750	700	700				38
Rope rate 钢丝绳倍率	1						Rope rate 钢丝绳倍率

Remark: the ratings are given for load over rear and side.
备注：侧方和后方作业。

Wind can have a significant effect on loads that may be lifted by a crane. Wind forces act differently on a crane, depending upon the direction from which the wind is blowing (e.g., wind on the rear of the boom can result in decreased forward stability, wind on the underside of the boom can result in decreased backward stability, and wind on the side of the boom can result in structural damages, etc.).

Sany Group stipulates that if the wind speed (velocity) is between 32 km/h to 48 km/h, that the load capacities be reduced to account for the size and shape of the load and the wind direction in relation to the machine for all boom, and swingaway boom extension lengths.

Sany Group also stipulates that operation of the crane in wind velocities over 48 km/h be prohibited. To assist you in determining prevailing wind conditions.

风会对起重机提升的荷载产生重大影响。风力对起重机的影响取决于风向（例如，动臂后部的风可能导致正向稳定性降低，动臂底部的风可能导致后向稳定性降低，动臂侧面的风可能导致结构损坏等）。

三一集团规定，如果风速（速度）在 32 km/h 至 48 km/h 之间，则应根据吊载尺寸和形状，风向以及副臂长度来减小吊载重量。

三一集团还规定禁止在风速超过 48 km/h 的情况下操作起重机。

Load Chart-Jib 副臂性能表

Optional 选配



Unit: kg

Boom angle (°) 主臂仰角	49.5+10.2			49.5+17.5			Boom angle (°) 主臂仰角
	0°	15°	30°	0°	15°	30°	
80	5500	3800	3300	3300	2200	1500	80
78	5200	3700	3100	3200	2100	1400	78
76	5000	3600	2900	3100	2000	1400	76
74	4800	3500	2700	2900	2000	1400	74
72	4300	3300	2700	2800	1900	1300	72
70	4000	3100	2600	2700	1700	1300	70
68	3800	3000	2500	2500	1600	1300	68
66	3600	2900	2400	2300	1500	1200	66
64	3300	2700	2300	2100	1500	1200	64
62	2900	2500	2200	1900	1500	1100	62
60	2500	2300	2000	1750	1400	1000	60
58	2300	2150	1850	1700	1400	1000	58
56	2100	2000	1700	1600	1300	1000	56
54	1800	1700	1600	1450	1200	950	54
52	1550	1450	1400	1300	1150	900	52
50	1300	1250	1200	1050	950	850	50
48	1100	1050	1000	850	800	800	48
46	900	850	800	700	650	650	46
44	750	700	700				44
Rope rate 钢丝绳倍率	1						Rope rate 钢丝绳倍率

Remark: the ratings are given for load over rear and side.
备注：侧方和后方作业。

Wind can have a significant effect on loads that may be lifted by a crane. Wind forces act differently on a crane, depending upon the direction from which the wind is blowing (e.g., wind on the rear of the boom can result in decreased forward stability, wind on the underside of the boom can result in decreased backward stability, and wind on the side of the boom can result in structural damages, etc.).

Sany Group stipulates that if the wind speed (velocity) is between 32 km/h to 48 km/h, that the load capacities be reduced to account for the size and shape of the load and the wind direction in relation to the machine for all boom, and swingaway boom extension lengths.

Sany Group also stipulates that operation of the crane in wind velocities over 48 km/h be prohibited. To assist you in determining prevailing wind conditions.

风会对起重机提升的荷载产生重大影响。风力对起重机的影响取决于风向（例如，动臂后部的风可能导致正向稳定性降低，动臂底部的风可能导致后向稳定性降低，动臂侧面的风可能导致结构损坏等）。

三一集团规定，如果风速（速度）在 32 km/h 至 48 km/h 之间，则应根据吊载尺寸和形状，风向以及副臂长度来减小吊载重量。

三一集团还规定禁止在风速超过 48 km/h 的情况下操作起重机。

Load Chart-Jib 副臂性能表



Unit: kg

Boom angle (°) 主臂仰角	49.5+10.2			49.5+17.5			Boom angle (°) 主臂仰角
	0°	15°	30°	0°	15°	30°	
80	5500	3800	3300	3300	2200	1500	80
78	5200	3700	3100	3200	2100	1400	78
76	5000	3600	2900	3100	2000	1400	76
74	4800	3500	2700	2900	2000	1400	74
72	4300	3300	2700	2800	1900	1300	72
70	4000	3100	2600	2700	1700	1300	70
68	3800	3000	2500	2500	1600	1300	68
66	3350	2900	2400	2300	1500	1200	66
64	2750	2500	2300	2050	1500	1200	64
62	2300	2100	2000	1650	1450	1100	62
60	1900	1750	1650	1350	1200	1000	60
58	1500	1400	1350	1050	950	950	58
56	1200	1100	1050	800	750	750	56
54	900	800	800	500			54
52	650	600	600				52
Rope rate 钢丝绳倍率	1						Rope rate 钢丝绳倍率

Remark: the ratings are given for load over rear and side.
备注：侧方和后方作业。



Unit: kg

Boom angle (°) 主臂仰角	49.5+10.2			49.5+17.5			Boom angle (°) 主臂仰角
	0°	15°	30°	0°	15°	30°	
80	5500	3800	3300	3300	2200	1500	80
78	5200	3700	3100	3200	2100	1400	78
76	5000	3600	2900	3100	2000	1400	76
74	4800	3500	2700	2900	2000	1400	74
72	4300	3300	2700	2800	1900	1300	72
70	3700	3100	2600	2650	1700	1300	70
68	3000	2600	2500	2150	1600	1300	68
66	2400	2100	2050	1650	1400	1200	66
64	1950	1700	1650	1250	1100	1050	64
62	1400	1300	1300	950	800	800	62
60	1050	1000	1000	650	550	550	60
58	750	700	700				58
Rope rate 钢丝绳倍率	1						Rope rate 钢丝绳倍率

Remark: the ratings are given for load over rear and side.
备注：侧方和后方作业。

Wind can have a significant effect on loads that may be lifted by a crane. Wind forces act differently on a crane, depending upon the direction from which the wind is blowing (e.g., wind on the rear of the boom can result in decreased forward stability, wind on the underside of the boom can result in decreased backward stability, and wind on the side of the boom can result in structural damages, etc.).

Sany Group stipulates that if the wind speed (velocity) is between 32 km/h to 48 km/h, that the load capacities be reduced to account for the size and shape of the load and the wind direction in relation to the machine for all boom, and swingaway boom extension lengths.

Sany Group also stipulates that operation of the crane in wind velocities over 48 km/h be prohibited. To assist you in determining prevailing wind conditions.

风会对起重机提升的荷载产生重大影响。风力对起重机的影响取决于风向（例如，动臂后部的风可能导致正向稳定性降低，动臂底部的风可能导致后向稳定性降低，动臂侧面的风可能导致结构损坏等）。

三一集团规定，如果风速（速度）在 32 km/h 至 48 km/h 之间，则应根据吊载尺寸和形状，风向以及副臂长度来减小吊载重量。

三一集团还规定禁止在风速超过 48 km/h 的情况下操作起重机。

Load Chart-Jib 副臂性能表



Unit: kg

Boom angle (°) 主臂仰角	49.5+10.2			49.5+17.5			Boom angle (°) 主臂仰角
	0°	15°	30°	0°	15°	30°	
80	5500	3800	3300	3300	2200	1500	80
78	5200	3700	3100	3200	2100	1400	78
76	5000	3600	2900	3100	2000	1400	76
74	4800	3500	2700	2900	2000	1400	74
72	4000	3300	2700	2700	1900	1300	72
70	3100	3000	2600	2000	1700	1300	70
68	2500	2400	2200	1750	1500	1300	68
66	1900	1800	1700	1300	1100	1000	66
64	1450	1300	1250	950	800	750	64
62	1150	950	900	600	500	500	62
60	750	650	600				60
Rope rate 钢丝绳倍率	1						Rope rate 钢丝绳倍率

Remark: the ratings are given for load over rear and side.
备注：侧方和后方作业。

Wind can have a significant effect on loads that may be lifted by a crane. Wind forces act differently on a crane, depending upon the direction from which the wind is blowing (e.g., wind on the rear of the boom can result in decreased forward stability, wind on the underside of the boom can result in decreased backward stability, and wind on the side of the boom can result in structural damages, etc.).

Sany Group stipulates that if the wind speed (velocity) is between 32 km/h to 48 km/h, that the load capacities be reduced to account for the size and shape of the load and the wind direction in relation to the machine for all boom, and swingaway boom extension lengths.

Sany Group also stipulates that operation of the crane in wind velocities over 48 km/h be prohibited. To assist you in determining prevailing wind conditions.

风会对起重机提升的荷载产生重大影响。风力对起重机的影响取决于风向（例如，动臂后部的风可能导致正向稳定性降低，动臂底部的风可能导致后向稳定性降低，动臂侧面的风可能导致结构损坏等）。

三一集团规定，如果风速（速度）在 32 km/h 至 48 km/h 之间，则应根据吊载尺寸和形状，风向以及副臂长度来减小吊载重量。

三一集团还规定禁止在风速超过 48 km/h 的情况下操作起重机。



SANY GROUP CRANE BU

SANY Mobile Crane Industrial Park, No.168 Jinzhou Avenue, Jinzhou Development Zone, Changsha City,
Hunan Province, P.R. China Zip 410600
Consulting sanycrane@sanygroup.com (Crane BU) / crd@sany.com.cn (IHQ)
After-sales Service 0086-400 6098 318

Reminder:

Any change in the technical parameters and configuration due to product modification or upgrade may occur without prior notice.
The machine in the picture may include additional equipment. This brochure is for reference only, and goods in kind shall prevail.
Copyright at SANY. No part of this brochure may be copied or used for any purpose without written approval from SANY.

© Edited in September 2022

三一集团起重事业部

中国湖南长沙金洲开发区金洲大道 168 号 三一汽车起重机产业园 邮编: 410600
咨询: sanycrane@sanygroup.com (重起事业部) / crd@sany.com.cn (国际总部)
海外售后服务: 0086-400 6098 318

温馨提示:

由于技术不断更新, 技术参数及配置如有更改, 恕不另行通知。图中机器可能包括附加设备, 本画册仅供参考, 以实物为准。
版权为三一所有, 未经三一书面许可, 本画册任何内容不得被复制用于任何目的。

© 2022 年 9 月版

